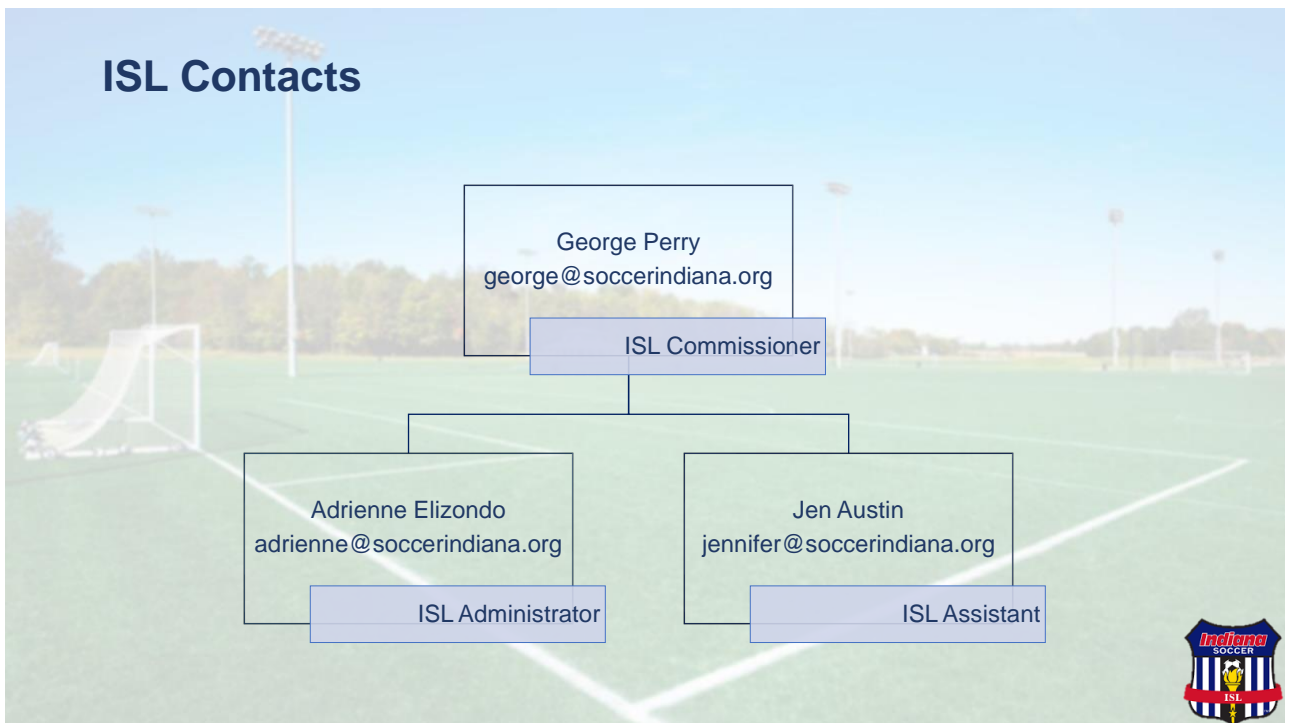




1



2

Indiana Soccer Website



3

4

Referee Courses

- Indiana has a shortage of referees due to
 - COVID-19 pandemic
 - Abuse referees receive during/after games
- Indiana Soccer will collaborate with clubs to provide local referee courses.
 - Recommendations for clubs:
 - Travel Teams - Approximately 2 referees for each team.
 - Recreational teams – Approximately $1\frac{1}{2}$ referees for each team.
- Indiana Soccer has three (3) offerings.



5

Referee Courses

- **US Soccer Referee Licensing**
 - This license allows the referee to be a center or assistant referee at any level.
 - Club assignors will make game assignments based on referee level of competency.
- **Indiana Soccer Small-Sided Referee Certification**
 - This certificate allows the referee to be a center or assistant referee in **small-sided games only** (9v9, 7v7, 4v4) at any Indiana Soccer sanctioned event.
- **Indiana Soccer Club A/R Certification – the Guardian Program**
 - Gives a volunteer information to be more comfortable assisting the center referee when the referee crew is missing a referee.



6

Rosters

- ISL Roster and State Roster are **identical**.
- State Roster must be created first.
- Club passing takes place at the State Roster level.
 - A player **CANNOT** be club passed until they are an approved primary player on an age-appropriate roster.
 - Club passing must be done by your club administrator. Your club administrator has the link with instructions on how to club pass.
- For roster questions, please contact your club administrator.



7

Player Exception Policy and Protocol

- **Maximum of four players** may be club passed up in play format (i.e., player club passed from 9v9 to 11v11) to any one team.
- These players must be rostered as primary players to their original team **or** their age group team **before** they can be club passed up (even if your club does not have a team in their age group).
- Complete the Application for Player Exception
 - Go to Indiana Soccer (www.soccerindiana.org) → Leagues → ISL Webinars & Documents → Scroll down to "Indiana Soccer League Important Documents"
- Have club administrator upload the document. Clubs **CANNOT** do their own club passing in this situation.
- Indiana Soccer completes the club passing for approved applications. George Perry will review and respond to applications as needed.



8

Game Day Procedures

- Bring 2 copies of your ISL game card to every game. Instructions for printing game cards is on our website.
 - 1 copy goes to the center referee.
 - 1 copy goes to the opposing team.
- Only players whose names are **typed on the game card** are eligible to play in the game.
 - Names are **NOT** allowed to be handwritten on the game card **unless** the referee is given permission by George Perry or his designee.
- No two (or more) players on a team may wear the same number during a game. Teams may use tape to adjust a jersey number for this reason.
 - When this is done, the team must make sure the player's accurate jersey number is updates on **BOTH** game cards.



9

Game Day Procedures

- Present your player passes (paper and/or virtual) **AND** game card to the referee for check-in.
 - The referee is to return the passes to you **immediately after check-in.**
- Make sure your player passes have recent headshot photos only.
- **Maximum of 4 adults allowed in a team's bench area if they meet the criteria below:**
 - Have their coach/manager pass **AND** their name typed on the game card.

OR

 - If DOCs have their director's card with them, they do not have to be on the game card.
- Pay the referees **PRIOR** to the start of the game.

**If a referee does not utilize the game card and/or player passes during the check in process, please notify George Perry with referee's name and game number. ISL want to use this as a learning experience for referees.*



10

Game Day Procedures

- Pay referees in attendance only for their position.
 - Teams will keep fees for referees not in attendance.
 - *If an incomplete referee crew insists on pay for all 3 positions, go ahead and pay referees BUT report incident to George Perry (game # and referee names) for reimbursement.*
- Games requiring a three-referee crew
 - If one or two referees are not in attendance, the home team is to supply the first club AR, and the away team will supply the second club AR.
 - Ideally, individuals volunteering as club ARs have completed the "Guardians of the Game" certification.
 - Club ARs are to assist with ball out of play only.
 - **A two-referee system is NOT allowed.**
- Both teams are responsible for reporting scores to ISL.
 - Scores must be reported before midnight.
 - Directions to enter the score can be located at the bottom of the game card. A QR code is also located on the game card.



11

Weather Related Updates

- In case of severe or extreme weather, all field closing announcements will be posted on the ISL website.
 - If possible, **ISL may move the game to an open site.**
- Teams impacted by closures will receive an email and/or a text message as to the status of their game.
- Please remember...
 - **Only a club's facility coordinator** may **CLOSE** the club's fields. The club **CANNOT** cancel games.
 - **Only ISL CANCELS** games.
- ISL does **NOT** cancel games based on forecasts.



12

ISL Communication Protocol

- The DOCs assist the ISL Commissioner in managing the league.
 - To assist the DOCs, it is recommended that teams communicate through their DOC or designated person within your club (if your club does not have an appointed DOC).
- Communicate to your DOC if you are having difficulty with another team, with the rules, policies, etc. The DOC will communicate this to the ISL Commissioner.
- If your issues are administrative (i.e., wrong scores, game changes, etc.), you can communicate directly to the league through the SUPPORT TICKET option in GotSport.
 - Game changes (postponement, reschedules, forfeits, etc.) must be made in a Support Ticket.
 - Submit a new Support Ticket for each game change request. Only one game per Support Ticket.



13

Support Tickets

- Instructions for submitting a Support Ticket are located on the ISL Webinars & Documents page

Indiana Soccer
(www.soccerindiana.org)

Leagues

ISL Webinars & Documents

Find link: How to Submit a
Support Ticket in GOTSPORT

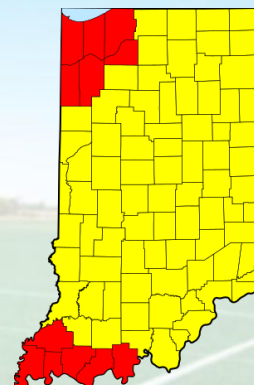


14

ISL Game Times and Time Zones

- Game times in the Public View schedule in GotSport will tell you if the game is in EDT or CDT.
- If you look at the schedule through your team account, game time will show as the time zone of the device you are using.
 - Example: If your device is in Indianapolis (EDT), your 2:00 pm game in Evansville (CDT) will appear as a 3:00 pm on your device.
- No matter which view you use, look for the time to say EDT or CDT.
- **TO AVOID CONFUSION, LOOK AT THE PUBLIC VIEW!**

Time Zones Map



Counties shown in:

- Red are in Central Time Zone (CDT)
- Yellow are in Eastern Time Zone (EDT)



15

Miscellaneous

- No team is permitted to play two **LEAGUE** 11v11 games in one day **OR** three 11v11 games in one weekend (Fri, Sat, Sun), except:
 - In 2nd, 3rd, & 4th divisions only, Evansville teams playing in a **central play group** are permitted to schedule two games in one day. There must be a **minimum of three hours** between the end of the first game and the beginning of the second game.
- 11U & 12U teams (9v9) may play two **LEAGUE** games in one day.
 - There must be a **minimum of three hours** between the end of the first game and the beginning of the second game.
- If a play group has combined age groups, the highest age in the play group will determine the referee fees.
 - Example: If the age group is 14/15U, the 15U referee fees are paid.



16

Scheduling Timeline

- It takes approximately 10 days at the conclusion of the scheduling meetings to input all changes.
- ISL will send out a notice when schedules are ready for your review.
- Submit schedule changes in a Support Ticket (both teams must agree to changes).
 - **During Free Change Period:** No charges to schedule changes made by dates below.

Division	Support Tickets submitted by:
13U & 14U Premier & 1 st 12U 2 nd White	August 8, 2023
11U-14U 2 nd , 3 rd , & 4 th	August 31, 2023
15U (11v11) 15 & Over (7v7)	September 6, 2023

- **After Free Change Period:** Team requesting change will be charged a \$100 change fee to its club account.



17

Fees

- Registration League Fees – due by August 20th
- Schedule/Reschedule Requests After Free Change Period - \$100 for each request
- Postponing game **2 days prior to game date (excluding game date)**
 - Team will be charged for the entire referee fee, assignor fee of \$10, **AND** change fee.
- Field Rental Fees
 - Teams will be charged for field rental fees for all non-neutral ISL games played at neutral location.
 - **Any changes** to games originally scheduled at Grand Park (inside AND outside of 48 hours) will be charged to the team requesting the change.
- Forfeit Fees
 - Teams not showing **OR** requesting a postponement the **day of the game** will be charged \$300 forfeit fee **plus referee fees, assignor fee, and field rental fee**
 - Teams requesting forfeits **2 days prior to game date (excluding game date)** will be charged \$250 forfeit fee **plus referee fees, assignor fee, and field rental fee**
 - Teams that postpone a game after free change period will be invoiced a \$150 forfeit fee if the game is not rescheduled (in addition to the postponement fees).



18

